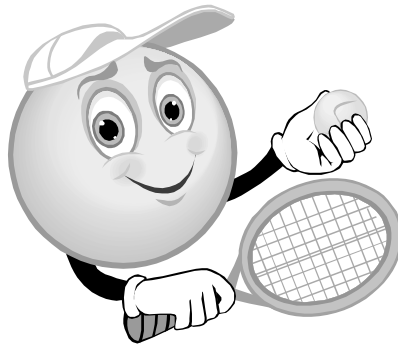


Oving with  
Pitchcott  
Newsletter



*June 2009*

[www.all-saints-oving.org.uk](http://www.all-saints-oving.org.uk)  
[www.oving.org](http://www.oving.org)

**JULY 2009**  
**CONTRIBUTIONS**



**By 10th  
June  
please**

Many thanks,  
Valerie Adams,  
12 The Pightle, Oving 640296  
Email:- valadams@waitrose.com

**LADIES NIGHT**

The next meeting will be at  
Teresa's house,  
The Old Dairy, Dark Lane  
on June 10<sup>th</sup> at 7:30pm

Bring along your sewing or knitting or  
whatever else you like to do  
and relax with other like minded ladies.  
Newcomers welcome  
Call Val on 640296 for info

<b>ROTAS</b>						
	11:00am	Sidesmen	Readers at 6:00pm	Chancel	Nave	Path and Bins
07-Jun	Family Service	D.Jones J.Brunswick		L.Ponsford	L.Watson	P.Berriman
14-Jun		J.Shields T.Baker	J.Brunswick Galations 2, 15-21	L.Ponsford	J.Smith	P.Goss
21-Jun	Family Communion	R.Firth R.Goss		S.Hodges	E.Conway	D.Goss
28-Jun		S.Berriman J.Goss	M.Ponsford 1 Kings 19, 15-16, 19-21 T.Cleaver Luke 9, 51-62	S.Hodges	C.Jenner	R.Smith
05-Jul	Family Service	C.Jenner K.Hinds		M.Hodges	H.Fone	J.Peeters



**TEDDY BEAR'S PICNIC LUNCH**

Hello, my name is Alex and I am 2 ½ .  
I come to Oving every Tuesday to spend  
the day with my Granny.

She thought it would be a nice idea if other little children from the  
village and their parents/grandparents could join us for a  
Teddy Bear's Picnic lunch at the  
Recreation Ground on  
Tuesday, 30<sup>th</sup> June from 12 noon.

If you can come please ring my Granny,  
Mary, on 641738

Please bring your own lunch and a teddy bear.



**Church & Churchyard Spring Cleans**

Thank you to everyone who turned out on Saturday 25<sup>th</sup> April to give the Church and Churchyard a good Spring clean. We hope to see even more keen volunteers at our next event.

**Cream Tea Services**

We will be holding sung Evensong services on 24<sup>th</sup> May, **28<sup>th</sup> June** and **26<sup>th</sup> July**, which will be preceded by cream teas and a chance to catch up with old friends or make some new ones. Teas will be served at 5pm with the services to follow at 6pm. We hope to see you there.

**Congratulations**

“Congratulations to Emma and Aldous Smewing on the birth of their beautiful daughter Darcey Jane at The Cave, Medway on April 19<sup>th</sup> 2009.”

**Annual Church Meeting - 10th May 2009**

The following people were elected to serve on the P.C.C for 2009-2010

**Church Wardens:** Jeremy Shields, Mark Ponsford

**Secretary:** Janet Stephenson

**Treasurer:** Nicky Batson

**Members:** Anne Coats, Elaine Conway, Robert Firth, Caroline Jenner, David Jones, Karen Ryle.

Grateful thanks were again extended to Val Adams for her work in editing the news letter. Also to Janet Brunswick, the outgoing Church Warden and to all the many volunteers who do such a good job keeping the churchyard tidy, the paths swept, the church neat and clean and providing flowers throughout the year. Your efforts are truly appreciated!

If anyone is willing to help with any of these tasks please contact Margaret Hodges; Tel: - 641391 and she will include you on the Rota.

**OVING RECREATION AND PAVILION FUND**

**FUNDING GROUP MEETING NO 16 – MONDAY 11<sup>th</sup> MAY 2009 AT 7PM IN THE READING ROOM, BOWLING ALLEY, OIVING**

<b>Present:</b>	<b>Roger Ball (Chairman)</b>	<b>Apologies:</b>	<b>Sally Parrott</b>
	<b>Jo Smith</b>		<b>Lynn Hillston</b>
	<b>Mary Peeters</b>		
	<b>Adrian Wilson</b>		
	<b>Roger Hawkins</b>		
	<b>Susie Hawkins</b>		

1. The Note of **Funding Group Meeting No 15** on 16.04.09 was approved. Since then, Lynn has indicated her wish to stand down from the Group after the Ball, due to family and other commitments. Roger has already thanked her for her substantial contributions to our efforts.

Continued overleaf

## **2. FORTHCOMING EVENTS**

### **Oving Springtime Ball on 16.05.09**

The Annual Parish Meeting will now take place on 28<sup>th</sup> May instead of next Thursday to enable final preparations for the Ball this week. Jo and her team report that all tickets have been sold and at least nine tables sponsored. The marquee will be erected on Wednesday and Thursday of this week. Maxine Myatt has dropped her plans to use the marquee on Sunday, and volunteers are requested to help with tidying up on Sunday morning at 11am. Jo will finalise the insurance arrangements, as we are not fully covered by the Church Farm policy. Food preparation has been allocated to the team of volunteers.

Roger H produced several copies of the programme, which he has generously funded. It is a very professional publication. Advertising is expected to raise £500, and there are some interesting raffle prizes. It was agreed to auction the John Motson match boards on the night, with a reserve of £250 on each board, and Roger H will make the arrangements. Ambrose McGinn is kindly supplying the wine at cost price.

It is difficult to estimate the eventual surplus on the event, but firm ticket sales, sponsorship and advertising will ensure that the Parish Council will not incur a shortfall.

### **Tennis Tournament on 19.07.09**

The date has been changed at Harriet Cullen's request, and this event will now be held on a Sunday. The concept is for 32 players to participate in a round robin tournament in the morning, using all the village courts, with 8 players progressing to semi-finals and finals at Oving House in the afternoon. There will be a fee of £10 for taking part, with spectators charged for entry to Oving House Grounds, where light refreshments will be available.

The event will be publicised through the Tennis Club, the Parish Newsletter and a separate flyer, with Roger H supervising the matches.

## **3. Funding up-date**

Jack Peeters is close to finalising the pavilion design with the architect, and plans will be available at the Annual Village Meeting. It is then intended to put the location and design options to the vote within the village. Once we have a decision on these matters, we can proceed with planning permission and firm applications for grant funding.

## **4. Any other business**

Roger B reported that planning for the Great Oving Run on 20.09.09 will commence after the Ball has taken place.

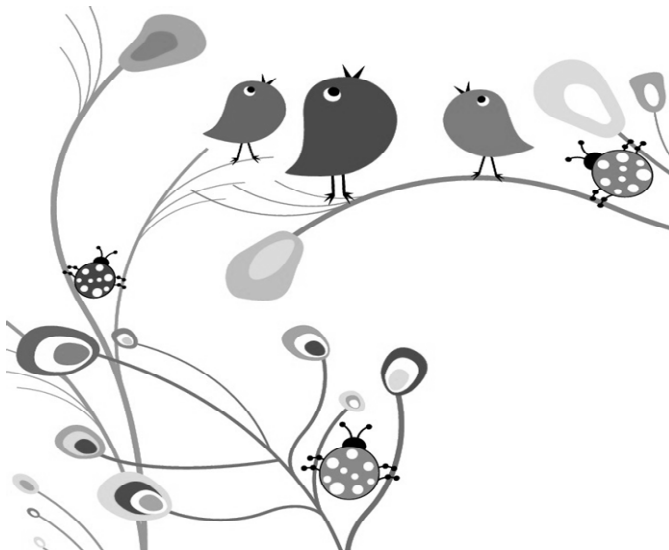
Roger H has entered the London to Brighton cycle ride on 22.06.09. Although sponsorship is for a specific charity, he is hoping to arrange some private sponsors for the Oving project.

**5. Date of next meeting:** Monday 15<sup>th</sup> June 2009 at 7.00pm in The Reading Room.

# **All Saints Church Fete**

**Oving Recreation Ground**

**Friday 26th June  
6.00pm – 8.00pm**



**Side Stalls**

**Children's Activities**

**Plenty of Food**

**Plenty to Drink**

**L☺ts of fun and friendly Pe☺ple**

### Garden Farm – Spring

Previously on Garden Farm:

We built some raised beds, new for this year, close to the house. We cleared the vegetable plot ready for planting potatoes and spring cleaned the greenhouse.

Maybe I've been watching too much US television.... But not so much that I didn't have time to get busy in the garden! This last four weeks have been very busy starting with planting up the raised beds and started the more temperature sensitive plants in the greenhouse. I received another gardening catalogue this week (Harod Horticultural I think), full of raised bed kits. The most expensive worked out £225 for one bed like mine – so all four would have cost £900 plus delivery!

On the raised beds I have already run out of space – and everything bar one is up and growing! First though I had to plant some flowers down each edge of the beds (you will recall they are 4' x 8'). This was a condition of planning permission from my local head of planning. So bedding pansies down two and sweet peas on the third – somehow I got away with nothing on the fourth (not for long now I've told you!). With the flowers in I could plant up – so in order.....

Bed 1 has sweet corn minipop (that's the miniature one you see at supermarkets), leeks, dwarf runner beans, two varieties of carrot – the red Japanese and mixed coloured, red onions and horse radish.

Bed 2 has yellow onions, runner beans and peas.

Bed 3 has sweet corn strawberry (that's the red coloured one), lettuce (two varieties), dwarf French bean (3 kinds), garlic, chives and red currants (a left over from last years church sale which somehow got left behind the greenhouse in its pot and rediscovered over the winter).

Bed 4 has leaf beet, beetroot, cabbage, radish, swede, parsnip (not up yet but they are notoriously hard to start) and carrots (regular kind).

As the seedlings come up I've used a "tent" of fine mesh to keep the birds off – and two of those are still in place. Because the beds are close to the house the birds generally stay a little away but you can't be too careful. Because the soil was new and is light and loose, weeding is a breeze – firstly there are relatively few, they are easy to spot, and you can pull up roots and all with no effort – what bliss!

In the main plot I have planted seven varieties of potato, more onions and now have courgettes to go in in the next day or so. I also planted a cherry tree (£4.95 from Aldi – had two, one died).

In the greenhouse I have tomatoes (thanks Philip and others), marrow, pumpkin (x2), squash (x2), lettuce.

In addition, I found a package of Australian seeds sold specifically for export to Britain (as a tourist). The seeds were chosen for our climate (with a bit of luck) and irradiated to prevent the transmission of disease. The only thing is I bought them in 1991. And guess what – a have a pot FULL of paperbark tree-lets (no – I don't know either) and two Eucalyptus (very pleased).

The biggest disappointment has been the chillies – none have germinated, yet I have Aubergines and Cucumbers up and running (both will stay in the greenhouse). And also those expanding “peat” plugs which come compressed and you add water – virtually nothing has germinated in them and most of them has developed a green algae growth – yet none of my other pots and seed trays has been any problem. I won't buy those again.

Still, you can't have everything and with such a wide variety of vegetables I think we have enough to choose from. In the beds I have allocated space for successional crops such as carrot, radish, lettuce where I'll sow more than one row over a few weeks and hope we can pick for a while.

And “just because” I can I bought some cactus seeds – I quite like cactus and have a knack for them having read a good article about how to keep them alive (a lot more water than you think in Summer) and how to make them flower (a lot less water than you think in Winter). Cactus seeds take weeks to germinate, and years to grow – many don't flower for the first 3-5 years. But here's a thing – some of them are edible and one produces “strawberries”!

So, I hope you had a very productive month in the garden, by next month we should have eaten radish and maybe lettuce... and just maybe I'll have some chilli plants started.

**A.P.R.E May 2009**  
**apre@oving.org**

**OVING PAVILLION  
LOCATION AND DESIGN GROUP MEETING NO 15  
6<sup>th</sup> May 2009  
ACTION NOTE**

**Present:** Jack Peeters (chairman), Kit Couper, Elaine Conroy, Stuart Taylor, Paul Waldron, Julian Bamford, Frank Bennet.

The group met to consider the plans presented to us by the Architect on building design location and cost. There were many comments (including written comments from Philip who was on holiday) and different viewpoints expressed by members of the group about the interpretation of the brief.

**Building Design**

One change that seemed to gain approval was the reduction in the height of the building by the use of a lower roof pitch.

It was decided that Jack would ask the architect to address the following issues on which there were concerns and particularly to comment on the cost and structural implications of each:

1. The re-instatement of a triangular pediment feature on the front elevation
2. The use of brick rather than timber on the exterior
3. Traditional brick and block construction rather than timber frame
4. A canopy at each end rather than at one end only
5. Solid, robust internal walls
6. A toilet in the referees room, a shower in the disabled toilet and a storage cupboard in the changing rooms
7. Removal of a curved feature between the front doors
8. Reverting to traditional hip roof rather than the small gable upstands shown on the plan
9. Traditional internal ceilings over the changing rooms with a vaulted ceiling only above the meeting room.

**Location**

The architect illustrated three locations. It had earlier been agreed however to present two to the village: the playground site and the site in front of the existing pavilion. If the site of the existing playground were chosen there would be costs involved in moving the equipment. On the other hand the equipment and surfacing have a limited life and will need replacing in stages over the next five or so years. The cost of replacement with modern equipment could be as much as £25,000. The village will need to face this sooner or later. The tennis club have offered £10,000 towards replacement equipment if the building is sited on the present playground area.


It is important for the playground not to be masked by the building and an adjustment to the plan would be necessary.

The group felt the site in front of the present pavilion was incorrectly shown and that the cost difference between the access pathways to the two sites has been exaggerated. The specification for both access paths should be the same.

An idea to create a new access to Bowling Alley was thought likely to cause more complications so would not be pursued.

Jack was asked to speak to the architect about these matters and also to produce the first draft of a consultation document for the village, setting out the pros and cons of the two possible locations. The group would then give their comments on the draft before it is passed to the Parish Council.

**Next Meeting:** to be arranged.

<b>Do you need a Babysitter? Call:</b>		<b>Adam Shields</b>	<b>641020</b>
		<b>Joshua George</b>	<b>641891</b>
		<b>Roberta Baker</b>	<b>641301</b>
		<b>Annelise Waldron</b>	<b>641656</b>
		<b>Katie Roberts</b>	<b>640511</b>
		<b>Jonathon Roberts</b>	<b>640511</b>
		<b>Lucy Hughes</b>	<b>640821</b>

## FIRST FRIDAY WALKS

### A beautiful blue carpet

The sight of millions of bluebells at their best must be one of the wonders of English nature. Our walk in May from Ashridge Monument to Ivinghoe Beacon and back allowed us to see this amazing sight in several places. I will leave it to walkers to decide which was more breathtaking, the blue carpet or the walk up to the Beacon.

We had lunch at the Valiant Trooper which has very good beer and excellent service. The food was good, but not up to the highest standard we've encountered recently.

On June 5th a walk in the Ashendon area is planned and in July perhaps a slightly longer one with a picnic lunch and afternoon teashop visit. Watch this space.

Our walks take place on the first Friday of the month and everyone is welcome. Meet outside 5, The Pightle at 9.30 am. Further details 01296 641738.

BOOK CLUB – 1 <sup>st</sup> THURSDAY OF EVERY MONTH		
DATE	HOST	PHONE NO
June 4th	Polly	641721
July 2nd	Teresa	641770
August 3rd	TBA	
September 3rd	Tessa	641301
New book lovers welcome. Reading list details available from anyone in the above list.		

**Day One Hundred and Six**

Today I hit the shops, prices are reasonable. I bought three T-shirts and two blouses for £14, these are to replace the clothes I have discarded on the trek down. South America is now littered with Matalan clothes. Buenos Aires is truly cosmopolitan and exciting. Lots of street entertainment, musicians and groups showing how the Tango should be performed. The weather is perfect, temperatures in the high 80's. At 6.30p.m. I was picked up by taxi and escorted to the bus station. It is huge, as it is the hub for coaches throughout Argentina. I have a 15 hour journey ahead of me, to the Iguassu Falls which straddle the borders between Argentina and Brazil.

The coach arrived, and my berth is on the upper deck. It is like being in an aeroplane. The seats are fully reclinable and convert into a bed. There is a privacy curtain and pillows and blankets are provided, it's like flying 1st class although I've never had that luxury. Shortly after "take off" I was served a scotch on the rocks. As it is now dark I'm not going to see much, so it's a choice between, John Grisham, my i-pod or the television in front of my seat. The bus is air-conditioned and we are informed it is 80°C outside and this is at 8.30p.m. Dinner was a choice between roast beef salad or pork steaks, plus starter and dessert served with wine. After the meal champagne and cookies were offered. I think all the alcohol is one way of ensuring that everybody sleeps. I just hope my snoring isn't too loud. The bed was surprisingly comfortable and I slept well.

**Day One Hundred and Seven**

Woke up at 7.00a.m. and breakfast was being served. I needed lots of black coffee.

There are lots of these buses on the roads the different operators' liveries are amazing; decorated with bright colours and patterns each trying to outshine their competitors. I relaxed, took in the scenery, just as I have for the last three months but now I am in a comfortable lounge rather than the hard bench seats of a truck.

The countryside is quite different from the parts I have travelled so far. Good agricultural land and intensively managed forests. There is poverty here, little individual roadside shacks with mothers and children selling small amounts: e.g. five pineapples.

Finally arrived at Puerto Iguassu at 1.30p.m. There was nobody at the small bus station to meet me. Panic! But managed to grab a taxi to take me to the local tour operator's office. Evidently they had been to the bus station but as the coach was late they had given up. Anyway they sorted out an air-conditioned mini-bus and guide just for me, to take me across the Brazilian border and to my four star hotel in Foz de Iguassu. This is a much larger town than Puerto Iguassu. Before dinner I went in search of a bank and found an HSBC ATM, as I did not have any Brazilian currency. I later found out that Argentinean currency is accepted.

To be continued

### MEMORIES OF SPORT IN OVING - 3

The Oving Sports Club was barely 7 months old, and had survived a very difficult financial situation regarding the purchase of a bucket, when another problem arose early in 1948. On February 16<sup>th</sup>, an emergency meeting was called:

*To discuss what could be done to the tennis courts to make them suitable for play during the coming season. Miss Joan Parrott reported that the Tennis Club had had a meeting, and put before the Sports Club a proposal that the tennis courts be re-turfed. An estimate was submitted for re-turfing one court at a cost of £150. For raking and re-seeding £30. It was pointed out that if the courts were re-seeded they would not be ready for playing on this season. After discussion, it was decided to have the worst court re-turfed and leave the other as it is.*

*The question of funds to meet this expense was then discussed. It was agreed that the members of the committee should voluntarily loan money to the Club. Any other person outside the committee could also loan money to the Club if they so wished.*

*Mr Milne proposed that only the Treasurer should know who loaned money, and how much the loan was, on the ground that some persons might not be able to afford as much as others. The Chairman pointed out that it was purely voluntary and completely at the discretion of each individual member, as to how much they loaned. The motion was not put to the vote, but was amended to the effect that only the Chairman, the Secretary and the Treasurer should know who loaned money, and how much that loan was.*

At the next meeting only ten days later, the level of subscriptions for the Cricket, Football and Tennis Clubs was discussed. It was proposed by Mr H. Clarke and seconded by Mr G. Ayres that the Cricket Club subscription should be 7/6, and this was agreed after some discussion. The same amount was to be charged by the Football Club. The Tennis Club was in urgent need of funds for the re-turfing, and it was proposed by Miss J. Parrott and seconded by Mr H. Clarke that the subscription for the Tennis Club should be £1 for adults and 10/- for juveniles under the age of 16. Non-members would be allowed to use the facilities, provided they were accompanied by a member who would collect a charge of 1/- per hour, to be handed to the Treasurer.

The following year, the Tennis Club subscriptions were halved, as members enjoyed the benefits of a newly turfed court.

RCB April 2009

**SCHORNE TEAM OF CHURCHES - SERVICES FOR JUNE 2009**

	Granboro'	N Marston	Oving	Dunton	Hoggeson	Harwick	Whitchurch	Quainton	Waddesdon	Westcott	Winchendon
<b>7 Jun</b> Trinity White	8.00 HC/PB AB										
		10:00 FS DH	11:00 FS AB		9:30 HC/PB PJM	9:30 HC/PB DM	11:00 HC PJM+DM		11:00 FC LW	9:30 HC/PB LW	
	6:00 1 <sup>st</sup> Sunday			6:00 FS PJM				6:30 HC PDM			
<b>14 Jun</b> 1 <sup>st</sup> after Trinity Green		9:30 HC AB				9:30 FS At Weedon PJM	11:00 FC DM	9:30 FS PDM	8.00 HC/PB LW		9:30 FS LW
	11:00 FC AB		6:00 HC AB					6:30 ES PDM			
<b>21 Jun</b> 2 <sup>nd</sup> after Trinity Green		9:30 FS AB	11:00 FC AB		11:00 FS PJM	9:30 HC PJM	11:00 HC SS	8.00 HC/PB PDM	11:00 FS LW	9:30 FS LW	
	11:00 FS PDM AB							6:30 ES PDM			
	6:00 ES AB										
<b>28 Jun</b> 3 <sup>rd</sup> after Trinity Green		9:30 HC AB					8.00 HC/PB DM				
	11:00 FS AB					9:30 FC DM	11:00 MS PJM	9:30 FC PDM	11:00 UA LW+JB		9:30 MS LW+JB
			6:00 ES JB					6:30 ES PDM			
<b>5 Jul</b> 4 <sup>th</sup> after Trinity Green	8.00 HC/PB AB										
		10:00 FS DH	11:00 FS AB			9:30 HC/PB DM	11:00 HC DM		11:00 FC LW+JB	9:30 HC/PB LW+JB	
	6:00 1 <sup>st</sup> Sunday							6:30 HC PDM			
<b>Holy Communion at Weedon Schoolroom Thursdays at 10.00am</b>											
4 Jun	DM	11 Jun	AB	Rev David Meakin	641606	Rev Janet Bayly	670245	HC	Holy Communion	PB	Prayer Book
18 Jun	PJM	25 Jun	PDM	Rev Andy Bell	670298	Rev Ann Varke	423363	FC	Family Communion	MS	Matins
				Rev Liz Wellers	655069	Mr David Heffer	670273	FS	Family Service	ES	Evansong
				Rev Philip D Mears	655237	Rev Jim Gorrige	01525	UA	United Service at Parish Church	UM	United Service at Methodist Church
				Rev Paul J Mansell	641246	Rev Paul J Mansell	240251	+B	With Baptism		